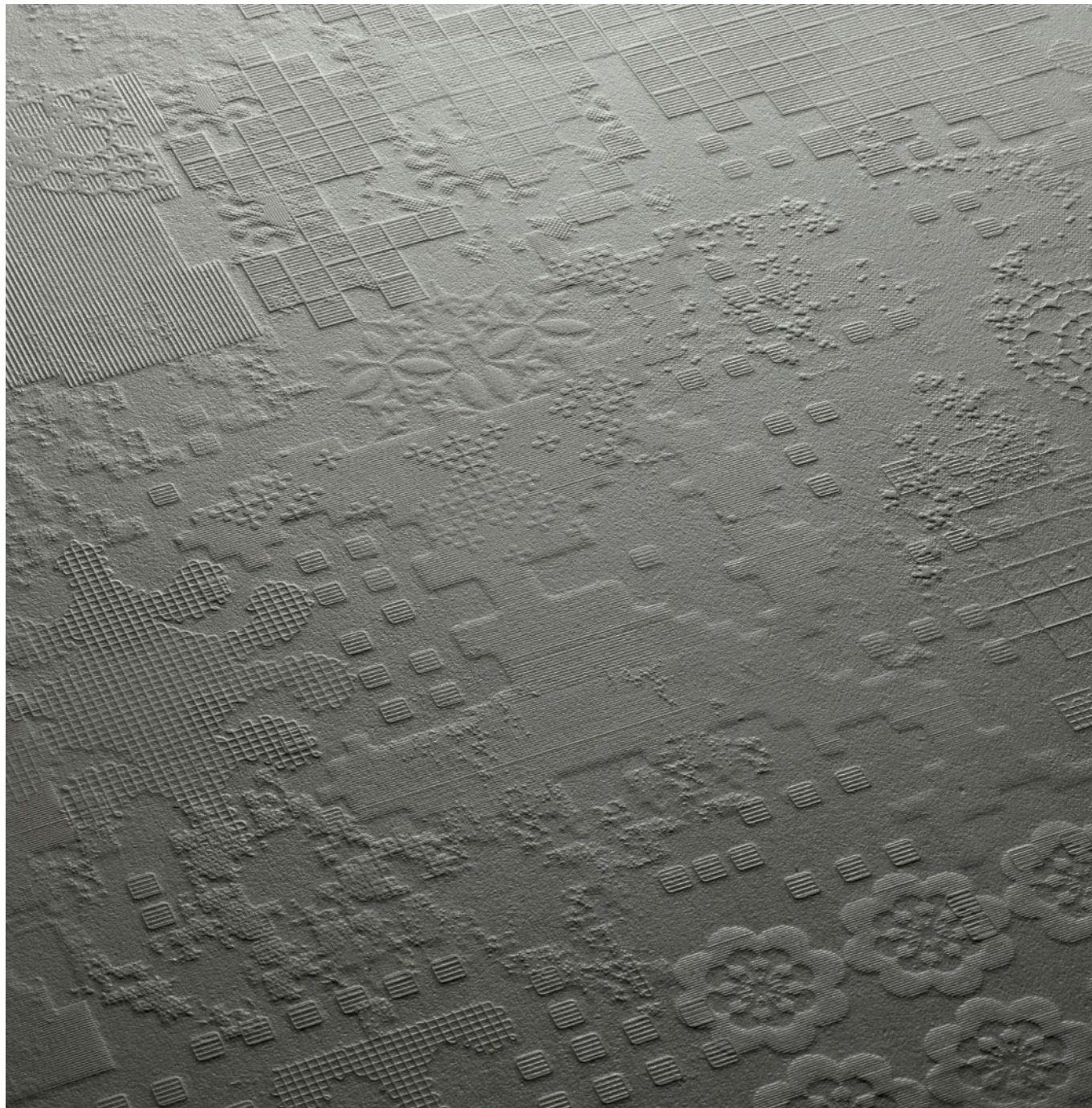


Mutina

Déchirer by Patricia Urquiola



EN

Déchirer Decor, Neutral
Déchirer Glass
Déchirer (La suite)
Net, Trace

General information
Laying and maintenance tips
Colors
Technical features
Packing

Déchirer Decor, Neutral

General information

collection	Déchirer
design	Patricia Urquiola, 2008
production	Industrial
material	Unglazed homogeneous porcelain stoneware
features	Squared and rectified slabs each one exactly the same as the others
thickness	12 mm
nominal sizes	DECOR: mosaico random 21,4-44,4 cm (8" - 17") DECOR: 120-120 cm (47"-47"), 60-120 cm (24"-47"), 60-60 cm (24"-24") DECOR: esagona 120-120 cm (47"-47"), esagona 60-60 cm (24"-24") NEUTRAL: 120-120 cm (47"-47"), 60-120 cm (24"-47"), 60-60 cm (24"-24")
specification	– 5 base colors – Relief texture "Decor" in 5 colors (registered design) – CONTINUA Technology production system (environmental certification ISO 14001:2004)
complementary pieces	Step, Corner tile, Skirting
awards	Edida 2009, Best of Neocon 2009, Home beautiful product 2009, Selected for Adi Design Index 2009, Good Design 2010, ICFF Editors Award Material 2011
patents	Registered design n° 001615790-001 – date of registration: 25/09/2009 Registered design n° 001615774-001 – date of registration: 25/09/2009
category	UNI EN 14411 App G (BIA group) UGL

DECOR



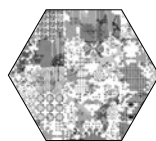
120-120 cm
47"-47"



60-120 cm
24"-47"



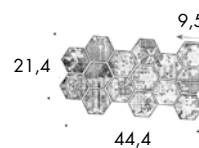
60-60 cm
24"-24"



esagona
120-120 cm
47"-47"



esagona
60-60 cm
24"-24"



mosaico random
21,4-44,4 cm
8" - 17"

NEUTRAL



120-120 cm
47"-47"



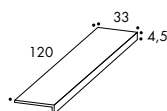
60-120 cm
24"-47"



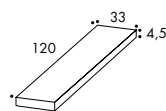
60-60cm
24"-24"

complementary pieces

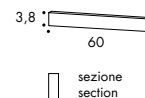
step
33-120-4,5 cm
13"-47"-1 7/8"



corner tile
33-120-4,5 cm
13"-47"-1 7/8"



skirting
3,8-60 cm
2"-24"



sezione
section

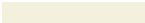
Laying and maintenance tips

use	Floor, wall – indoor, outdoor.
installation	For an even, smooth shading effect when laying, alternate material from several different boxes. The double spreading technique is recommended for the 120x120 size.
recommended adhesive	Adhesive for porcelain stoneware.
recommended joints	2mm joints. Use wedges to fix the caliber differences in work size between tiles.
recommended fillers	Cement-based grout / epoxy grout. Remove all traces of grout carefully before it dries completely.
cleaning at the end of installation	CEMENT-BASED GROUT: Buffered acid (e.g. DETERDEK PRO by FILA, or similar). Wet the floor with water, dilute the product 1:5 with water and pour it on the floor. Wait for 2 or 3 minutes then use a white scotch brite pad and rinse well with clean water. EPOXY GROUT: Alkaline detergent (e.g. FILA CR10 by FILA). FILA CR10: apply pure, wait for 30 minutes then use a green scotch brite pad. SILICONE: Solvent for silicone (e.g. FILA ZERO SIL.). Pour it straight onto the stain, wait for 20 minutes and remove the mark using scotch brite. PAINT: Can usually be removed using water, but if resin-based paints or particular enamels have been used, it is best to ask the manufacturer which solvent is most suitable. RUST: stain remover es. FILA NO RUST. Apply the product onto the stain, leave for 15 minutes, remove the residue and rinse thoroughly.
general cleaning (installed tiles)	You are recommended to use ordinary neutral detergent diluted in water. Avoid using acid or alkaline products, waxes and/or impregnants. During ordinary cleaning it is recommended to use extremely abrasive items (such as scourers and iron or steel sponges) as little as possible. This recommendation must be adhered to rigorously in the case of tiles with a glossy surface finishing as they are more susceptible to the risk of scuffs, scratches and loss of shine, etc. In the event of heavy dirt or particularly textured surfaces, use an alkaline detergent and rinse after washing. For large surfaces, the use of a floor washing machine is recommended. During every-day cleaning procedures, it is necessary to remember that certain types of dirt (dust, sand) increase the abrasive effect of foot-traffic. Therefore we recommend that you avoid bringing in this type of dirt, which comes in from the outside, by placing a door-mat at the entrance.
calibers (real size)	120cm x 120cm -> 1190mm x 1190mm 60cm x 60cm -> 594mm x 594mm 60cm x 120cm -> 594mm x 1190mm

Colors



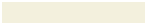
Decor Bianco



grout: bianco 50



Neutral Bianco



grout: bianco 50



Decor Grigio



grout: grigio 44



Neutral Grigio



grout: grigio 44



Decor Piombo



grout: piombo 53



Neutral Piombo



grout: piombo 53



Decor Nero



grout: nero 06



Neutral Nero



grout: nero 06



Decor Ecrù



grout: ecrù 52




Neutral Ecrù



grout: ecrù 52

Technical Features

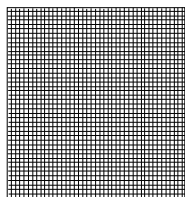
STANDARD	FEATURES	VALUE REQUIRED	DÉCHIRER
ISO 10545/3	water absorption	< 0,5%	0,06%
ASTM C373		< 0,5%	0,06%
ISO 10545/4	breaking strength	≥ 35 N/mm ²	61,2 N/mm ²
ISO 10545/6	resistance to deep abrasion	<175 mm ³	in conformity
EN 101	surface hardness (scala mohs)	> 5	8
ISO 10545/9	resistance to thermal shock	no visible alteration	resistant
ASTM C484		no samples must show visible defects	unaffected
ISO 10545/12	frost resistance	no visible alteration	resistant
ASTM C1026		unaffected	unaffected
ISO 10545/13	resistance to chemical attacks	no visible alteration	resistant
ASTM C650			unaffected
ISO 10545/14	stains resistance	class 3	class 5
DIN 51130-04	slip resistance	medium values 6÷10° R9 10÷19° R10 19÷27° R11 27÷35° R12 > 35° R13	déchirer neutral R10 déchirer decor R10
DIN 51097			B Neutral A Decor
DCOF		—	
Pendulum ENV12633			Class 1
 UPEC			available upon request
LEED CERTIFICATION 4.1			20% recycled material
ENVIROMENTAL MANAGEMENT SYSTEM ISO 14000 E ISO 9001			
VOC Emission			available upon request
Declaration of Contents			available upon request
EPD			available upon request
SDS			available upon request
BPD3			available upon request
HPD			available upon request

Déchirer Glass

General information

collection	Déchirer
design	Patricia Urquiola, 2009
production	Artisanal
material	Recycled glass mosaic
thickness	4,5 mm
nominal sizes	0,9-0,9 cm su rete 30-30 cm (on net 12"-12")
specification	The collection is: – 5 base colors
category	–

GLASS



0,9-0,9 cm su rete 30-30 cm
on net 12"-12"

Laying and maintenance tips

use	Floor, wall – indoor, outdoor.
installation	Lay on perfectly flat, dry walls.
recommended adhesive	Cement-based or epoxy adhesive for vitreous glass mosaics. Use with a fine-tooth spatula, max. height 3 mm. Use white adhesive on WHITE tiles. Use grey adhesive on OTHER COLOURS.
recommended joints	Place the sheets with the same joint as within the sheet. WAIT UNTIL THE ADHESIVE HAS DRIED COMPLETELY BEFORE REMOVING THE ADHESIVE FILM (at least 72 hours if cement-based adhesive is used).
recommended fillers	Cement-based grout / epoxy grout. Remove all traces of grout carefully before it dries completely. Shade-on-shade grout is recommended.
cleaning at the end of installation	CEMENT-BASED GROUT: Buffered acid (e.g. DETERDEK PRO by FILA, or similar). Wet the floor with water, dilute the product 1:5 with water and pour it on the floor. Wait for 2 or 3 minutes then use a white scotch brite pad and rinse well with clean water. EPOXY GROUT: Alkaline detergent (e.g. FILA CR10 by FILA). FILA CR10: apply pure, wait for 30 minutes then use a green scotch brite pad. SILICONE: Solvent for silicone (e.g. FILA ZERO SIL.). Pour it straight onto the stain, wait for 20 minutes and remove the mark using scotch brite. PAINT: Can usually be removed using water, but if resin-based paints or particular enamels have been used, it is best to ask the manufacturer which solvent is most suitable. RUST: stain remover es. FILA NO RUST. Apply the product onto the stain, leave for 15 minutes, remove the residue and rinse thoroughly.
general cleaning (installed tiles)	You are recommended to use ordinary neutral detergent diluted in water. Avoid using acid or alkaline products, waxes and/or impregnants. During ordinary cleaning it is recommended to use extremely abrasive items (such as scourers and iron or steel sponges) as little as possible. This recommendation must be adhered to rigorously in the case of tiles with a glossy surface finishing as they are more susceptible to the risk of scuffs, scratches and loss of shine, etc. In the event of heavy dirt or particularly textured surfaces, use an alkaline detergent and rinse after washing. For large surfaces, the use of a floor washing machine is recommended. During every-day cleaning procedures, it is necessary to remember that certain types of dirt (dust, sand) increase the abrasive effect of foot-traffic. Therefore we recommend that you avoid bringing in this type of dirt, which comes in from the outside, by placing a door-mat at the entrance.
calibers (real size)	–

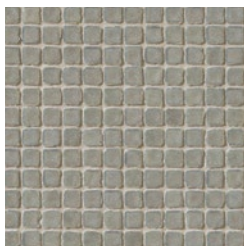
Colors



Glass Bianco



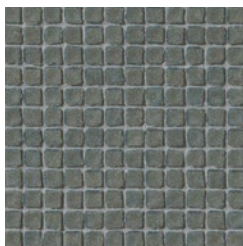
grout: bianco 50



Glass Grigio



grout: grigio 44



Glass Piombo



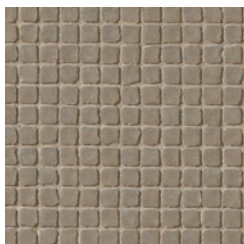
grout: piombo 53



Glass Nero



grout: nero 06



Glass Ecrù



grout: ecrù 52

Technical Features

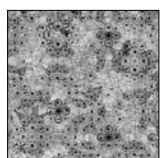
STANDARD	FEATURES		GLASS
ISO 10545/3	water absorption	<0,5%	0,00%
ISO 10545/9	thermal shock resistance	no alteration	no alteration
ISO 10545/12	frost resistance	no alteration	no alteration
ISO 10545/13	acids and alkalis resistance	min B	A
ISO 10545/14	stains resistance	class 3	class 5
DIN 51094	colours resistance to fading		no alteration
LEED CERTIFICATION 4.1			40% recycled material
VOC Emission			available upon request
Declaration of Contents			available upon request
SDS			available upon request
BPD3			available upon request
HPD			available upon request

Déchirer (La Suite) Net, Trace

General information

collection	Déchirer
design	Patricia Urquiola, 2010
production	Industrial
material	Unglazed homogeneous porcelain stoneware
features	Squared and rectified slabs each one exactly the same as the others
thickness	12 mm
nominal sizes	NET: 120·120 cm (47"·47"), 30·120 cm (12"·47"), 60·60 cm (24"·24") TRACE: 120·120 cm (47"·47"), 30·120 cm (12"·47"), 60·60 cm (24"·24")
specification	– 3 base colors – 2 engraved textures, Trace and Net, in 3 colors (registered design) – CONTINUA Technology production system (environmental certification ISO 14001:2004)
complementary pieces	TRACE: Step, Corner tile, Skirting
patents	Registered design n° 001913062-0005 – date of registration: 06/09/2011 Registered design n° 001912999-0014 – date of registration: 06/09/2011
category	UNI EN 14411 App G (BIA group) UGL

NET



120·120 cm
47"·47"



30·120 cm
12"·47"



60·60 cm
24"·24"

TRACE



120·120 cm
47"·47"



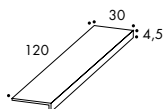
30·120 cm
12"·47"



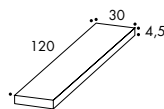
60·60 cm
24"·24"

complementary pieces

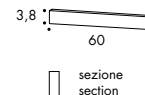
step
30·120·4,5 cm
12"·47"·1 7/8"



corner tile
30·120·4,5 cm
12"·47"·1 7/8"



skirting
3,8·60 cm
2"·24"



Laying and maintenance tips

use	Floor, wall – indoor, outdoor.
installation	For an even, smooth shading effect when laying, alternate material from several different boxes. The double spreading technique is recommended for the 120x120 size.
recommended adhesive	Adhesive for porcelain stoneware.
recommended joints	2mm joints. Use wedges to fix the caliber differences in work size between tiles.
recommended fillers	Cement-based grout / epoxy grout. Remove all traces of grout carefully before it dries completely.
cleaning at the end of installation	<p>CEMENT-BASED GROUT: Buffered acid (e.g. DETERDEK PRO by FILA, or similar). Wet the floor with water, dilute the product 1:5 with water and pour it on the floor. Wait for 2 or 3 minutes then use a white scotch brite pad and rinse well with clean water.</p> <p>EPOXY GROUT: Alkaline detergent (e.g. FILA CR10 by FILA). FILA CR10: apply pure, wait for 30 minutes then use a green scotch brite pad.</p> <p>SILICONE: Solvent for silicone (e.g. FILA ZERO SIL). Pour it straight onto the stain, wait for 20 minutes and remove the mark using scotch brite.</p> <p>PAINT: Can usually be removed using water, but if resin-based paints or particular enamels have been used, it is best to ask the manufacturer which solvent is most suitable.</p> <p>RUST: stain remover es. FILA NO RUST. Apply the product onto the stain, leave for 15 minutes, remove the residue and rinse thoroughly.</p>
general cleaning (installed tiles)	You are recommended to use ordinary neutral detergent diluted in water. Avoid using acid or alkaline products, waxes and/or impregnants. During ordinary cleaning it is recommended to use extremely abrasive items (such as scourers and iron or steel sponges) as little as possible. This recommendation must be adhered to rigorously in the case of tiles with a glossy surface finishing as they are more susceptible to the risk of scuffs, scratches and loss of shine, etc. In the event of heavy dirt or particularly textured surfaces, use an alkaline detergent and rinse after washing. For large surfaces, the use of a floor washing machine is recommended. During every-day cleaning procedures, it is necessary to remember that certain types of dirt (dust, sand) increase the abrasive effect of foot-traffic. Therefore we recommend that you avoid bringing in this type of dirt, which comes in from the outside, by placing a door-mat at the entrance.
calibers (real size)	60cm x 60cm -> 594mm x 594mm 120cm x 120cm -> 1190mm x 1190mm 30cm x 120cm -> 296mm x 1190mm

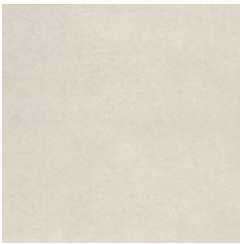
Colors



Net Calce



grout: calce 01



Trace Calce



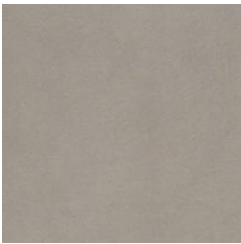
grout: calce 01



Net Cemento



grout: cemento 60



Trace Cemento



grout: cemento 60



Net Cenere



grout: cenere 62




Trace Cenere



grout: cenere 62

Technical Features

STANDARD	FEATURES	VALUE REQUIRED	DÉCHIRER (LA SUITE)
ISO 10545/3	water absorption	< 0,5%	0,06%
ASTM C373		< 0,5%	0,06%
ISO 10545/4	breaking strength	≥ 35 N/mm ²	61,2 N/mm ²
ISO 10545/6	resistance to deep abrasion	<175 mm ³	in conformity
EN 101	surface hardness (scala mohs)	> 5	8
ISO 10545/9	resistance to thermal shock	no visible alteration	resistant
ASTM C484		no samples must show visible defects	unaffected
ISO 10545/12	frost resistance	no visible alteration	resistant
ASTM C1026		unaffected	unaffected
ISO 10545/13	resistance to chemical attacks	no visible alteration	resistant
ASTM C650			unaffected
ISO 10545/14	stains resistance	class 3	class 5
DIN 51130-04	slip resistance	medium values 6÷10° R9 10÷19° R10 19÷27° R11 27÷35° R12 > 35° R13	net R11 trace R11
DIN 51097			B Neutral A Decor
DCOF		–	–
Pendulum EN12633			–
			available upon request
LEED CERTIFICATION 4.1			20% recycled material
ENVIROMENTAL MANAGEMENT SYSTEM ISO 14000 E ISO 9001			
VOC Emission			available upon request
Declaration of Contents			available upon request
EPD			available upon request
SDS			available upon request
BPD3			available upon request
HPD			available upon request

Packing

SIZE	PCS-SQM	SQM-PC	PC-PAL	KG-PC	KG-PAL	SQM-PAL
120-120 cm	0,69	1,44	36	38,30	1379,00	51,84

SIZE	PCS-SQM	PCS-BOX	SQM-BOX	BOX-PAL	KG-BOX	KG-PAL	SQM-PAL
esagona 120-120 cm	1,07	1	0,93	36	25,10	904	33,48
60-120 cm	1,38	2	1,44	24	38,65	928	34,56
30-120 cm	2,78	2	0,72	48	19,10	917	34,56
60-60 cm	2,77	3	1,08	32	29,00	928	34,56
esagona 60-60 cm	4,30	4	0,92	24	25,15	604	22,08
mosaico random decor 21,4-44,4 cm	10,52	5	0,47	56	12,50	700	26,60
step 30-120-4,5 cm	–	2	2,40 ml	–	26,00	–	–
corner tile 30-120-4,5	–	1	1,20 ml	–	13,00	–	–
skirting 3,8-60 cm	–	10	6,00 ml	–	5,85	–	–
déchirer glass 30-30 cm	11	11	1,00	60	6,05	363	60,00