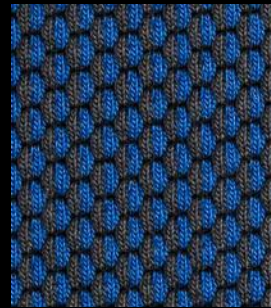




lollipop



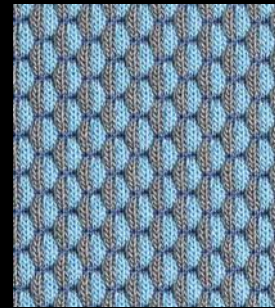
winegum



candybar



menthol



peppermint



popsicle



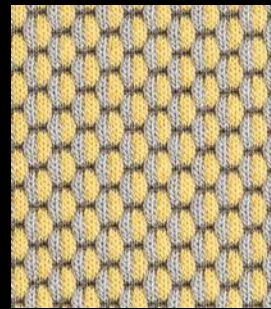
pastille



pistachio



candycane



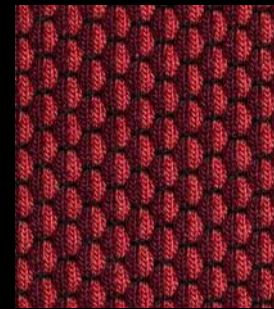
popcorn



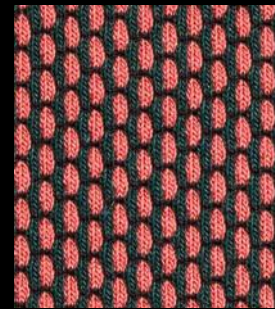
cottoncandy



tumtum



bonbon



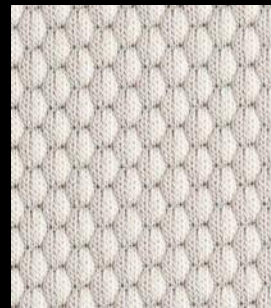
machron



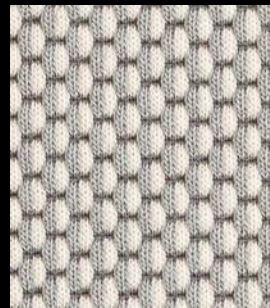
toffee



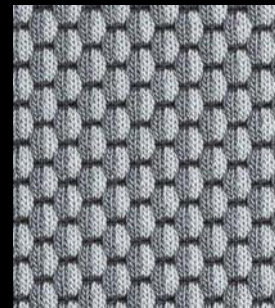
cookie



meringue



salt



bitter



licorice

# Drop

cat. Special

60% wool - 20% polyamide - 20% polyester  
Flame retardant - 80.000 Martindale



laCividina	cat. Special	Drop	Technical details	
			Composition	60% wool - 20% polyamide - 20% polyester
			Weight	Gr./m² 600
			Abrasion test	Martindale - ISO 12947-2: 80.000 rubs
			Lightfastness	ISO 105-B02: 6/7
			Pilling	ISO 12945-2: 4
			Fastness to rubbing	ISO 105-X12: Wet 4/5 Dry 4
			Flame retardant	EN 1021-1/2 cigarette & match BS 5852 part 1 cigarette & match DIN 4102-B2 surface ignition US Cal. Tech. Bull. 117
			Features	Stretch material
		Environment	Oeko-Tex 100 certified Ecologically produced in Europe	
		2018		